

GUBI

The Beetle Collection





GamFratesi

GamFratesi was established in Copenhagen in 2006 by Danish architect Stine Gam (born 1975) and her partner, Italian architect Enrico Fratesi (born 1978). Gam studied at the school of architecture in Aarhus, Denmark, before training and working as an architect in both Italy and Tokyo. Fratesi read architecture at universities in Florence and Ferrara and worked as an architect in Stockholm and Denmark while still studying. As a pair, they operate in symbiosis, sharing everything across their personal and professional lives. Gam takes a particular and thoughtful approach to design, while Fratesi moves more conceptually and energetically. This instinctive and spontaneous fusion of two ways of working is one of their key strengths.

GamFratesi has been one of GUBI's closest collaborators for more than a decade, and has created a wide range of bold and timeless furniture designs. These include the elegantly geometric TS Table Collection, the highly distinctive Bat Chair, and their insect-inspired Beetle Collection, which features the Beetle Chair – now one of GUBI's most beloved iconic designs.

GamFratesi has been recognized with a number of awards over the last two decades, including the Chicago Athenaeum Museum of Architecture's Good Design Award and the FinnJuhl prize in 2015; the IF Award in 2017; the Bruno Mathsson prize in 2018; and in 2020, they were named Elle Decoration International Design Award (EDIDA)'s Designer of the Year.





Inspired by Nature



“Insects are beautiful creatures of nature. Each element of their bodies has a specific function – a true encounter between form and function, distilled into the essential. We found inspiration for a chair that could be at once highly functional as well as beautiful.”

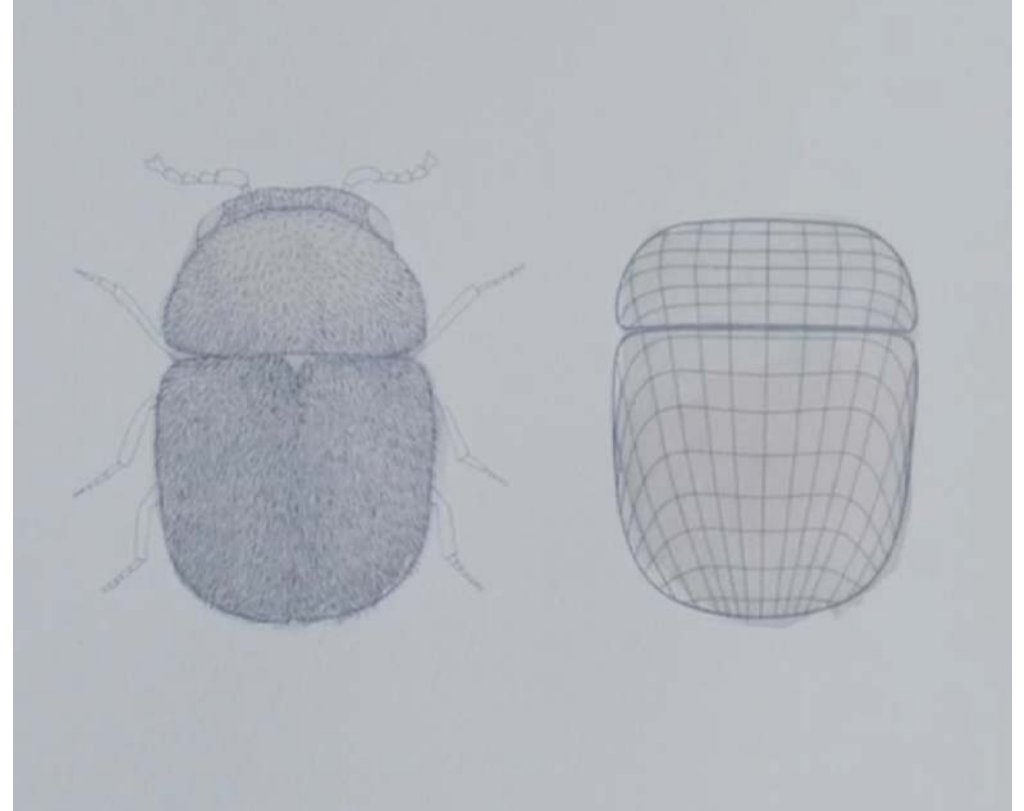
- GAMFRATESI

From beetle to Beetle

Plants and animals have adapted over millennia to respond to evolutionary niches and perhaps none more so than the humble beetle. 300,000 species live across the globe in almost every environment on land or in water. Their sheer diversity and adaptability have seen them inform and inspire everything from ancient cultural myths to twentieth-century cars and British pop bands.

At once iconic and ergonomic

For the Beetle Chair, GamFratesi became captivated by the idea of translating the form of a beetle into a product for the home. The pair drew on the form and function of an archetypal beetle to create an iconic and ergonomic chair with a hard, yet supple, two-part outer shell with comfortable inner surface.



The growing discipline of biomimicry proposes the ancient ingenuity of nature be translated into contemporary product and furniture design, in order to seek smarter solutions that are good for our mental and physical health as well as the planet.

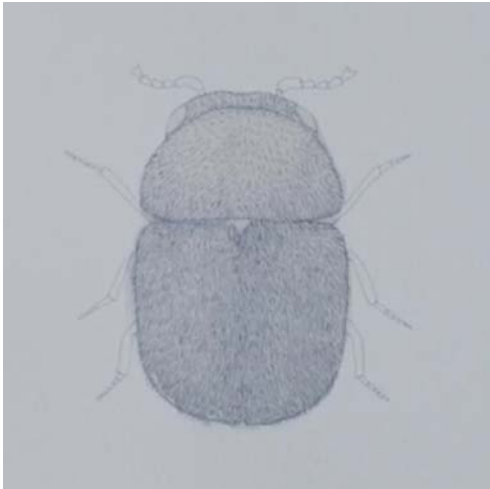


Micromovements for Maximum Comfort

The structure of a beetle's articulated shell comprises solid plates connected by flexible sutures, which allow the beetle to move, while maintaining protection and form.

Echoing the structure of the beetle's exoskeleton, the Beetle Chair's two-part shell is made from one continuous curve. It is engineered to enable micromovements that respond to the sitter, ensuring ergonomic performance while maintaining a strong silhouette.

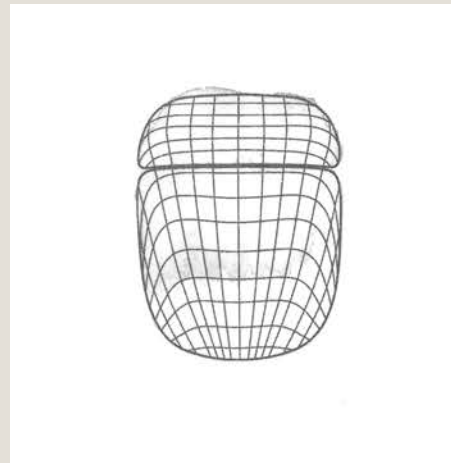
The cushioned inner surface of the chair reflects the soft underbelly of the beetle – so ingeniously protected by its shell – and nurtures the human body in intimacy and comfort.





“It looks solid and impenetrable and yet, in places, it is sinuous and flexible, and this seeming contradiction is what enables it to move freely. All these elements are linked and work together in a fascinating way. One of the many reasons we studied beetles was their ability to carry out technical movements while keeping their parts rigid and defined.”

- GAMFRATESI





Form Inspired by Nature

The Beetle Chair's upholstered inner shell can be customized in any one of a vast array of fabrics, further echoing the versatility of its insect namesake. Its distinctive expression enables the Beetle Chair to carry even bold colors and graphic patterns – or upholstery can be color matched to the plastic shell for a more understated finish.

Bases are available in a range of carefully considered finishes, with stacking and castor versions adding further functionality. The collection doesn't quite match the 300,000 species of beetle, but there's enough to ensure the perfect fit.



“Beetles are dynamic insects so we wanted to create variants of the Beetle Chair adding new functionality each time, while carefully reportioning the form to maintain their distinctive aesthetic.”

- GAMFRATESI

The Beetle Chair

Comfort

The seat and back of the Beetle Chair are perfectly tailored to the human form to create outstanding sitting comfort.

Upgradeable

It's possible to change and upgrade legs and upholstery over time to give the Beetle Chair a different expression and new life.

The flex

The possibility to tilt the back in micro-movements adds on to its unique comfort.



The Beetle Chair

Unique customisation

The wide range of upholstery options and different bases makes it possible to put your personal touch to the chair and create one of its kind.

Short lead times

The Beetle Dining Chair is available in our Fast Track assortment for short lead times that allows for quick turnaround projects where we offer 19 different fully upholstered Beetle Dining Chairs.





The Beetle Dining Chair

BIFMA certified plastic edition

A fresh new look

The new plastic edition of the Beetle Dining Chair represents a modern and lightweight update to an iconic design in a fresh matte finish.

Durable design

The Beetle Dining Chair's BIFMA and Level 2 certification guarantees its durability and robustness for commercial use, ensuring that its striking silhouette will stand the test of time.

Comfort

The Beetle Dining Chair already offers unparalleled levels of comfort in this typology, and the plastic edition is no different, ensuring that you will hold your audience's attention no matter how long the presentation.



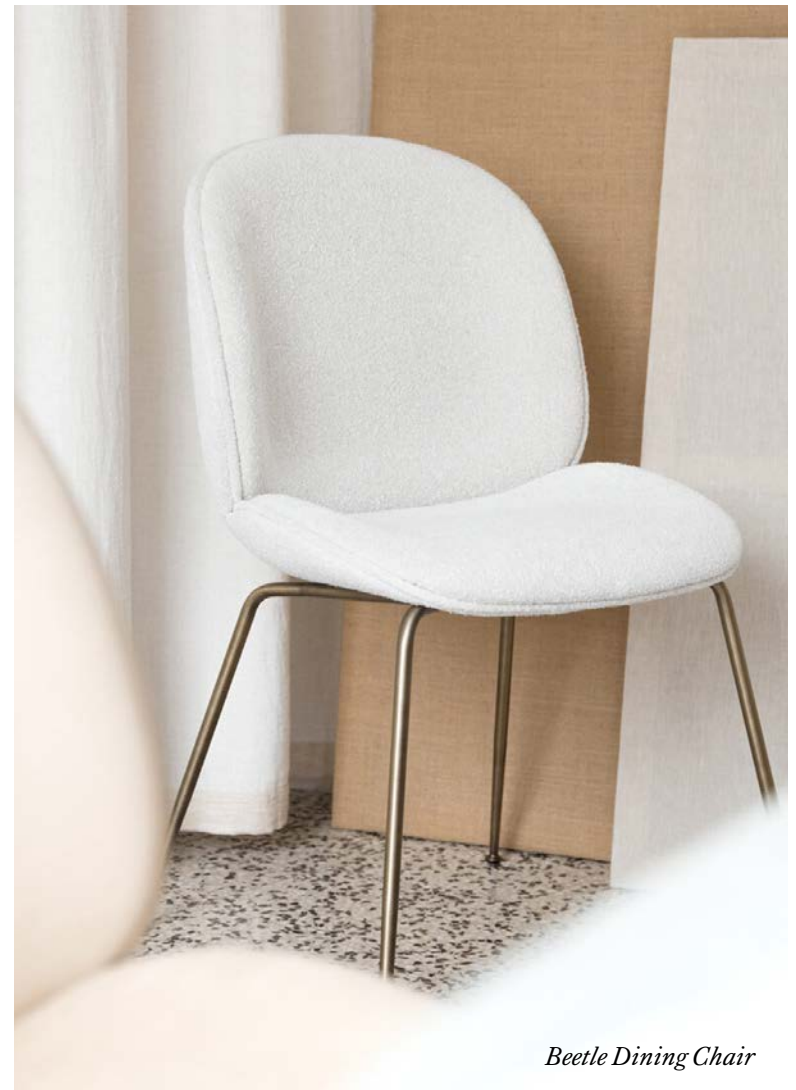


Home Inspiration

Beetle Dining Chair



Beetle Dining Chair



Beetle Dining Chair



Beetle Dining Chair



Beetle Dining Chair



Beetle Dining Chair



Beetle Counter Chair



Beetle Counter Chair



Contract Inspiration

Beetle Dining Chair



Beetle Dining Chair



Beetle Dining Chair



Beetle Meeting Chair



*Beetle Dining Chair - Flora Danica, Paris
Design: GamFratesi*



Beetle Dining Chair



*Beetle Counter Chair - Alchemist, Copenhagen
Design: Chef Rasmus Munk & Architect Michael Duncalf of Duncalf Ltd (UK)*



Beetle Counter Chair



Beetle Lounge Chair - Alchemist, Copenhagen
Design: Chef Rasmus Munk & Architect Michael Duncalf of Duncalf Ltd (UK)



Beetle Lounge Chair



Beetle Dining Chair



Beetle Dining Chair - Hotel Mauritzshof, Münster
Design: Lambs and Lions



*Beetle Dining Chair - Eklund Stockholm New York, Stockholm
Design: Internal*



*Beetle Lounge Chair - Parc Broekhuizen, Netherlands
Design: Judith van Mourik*



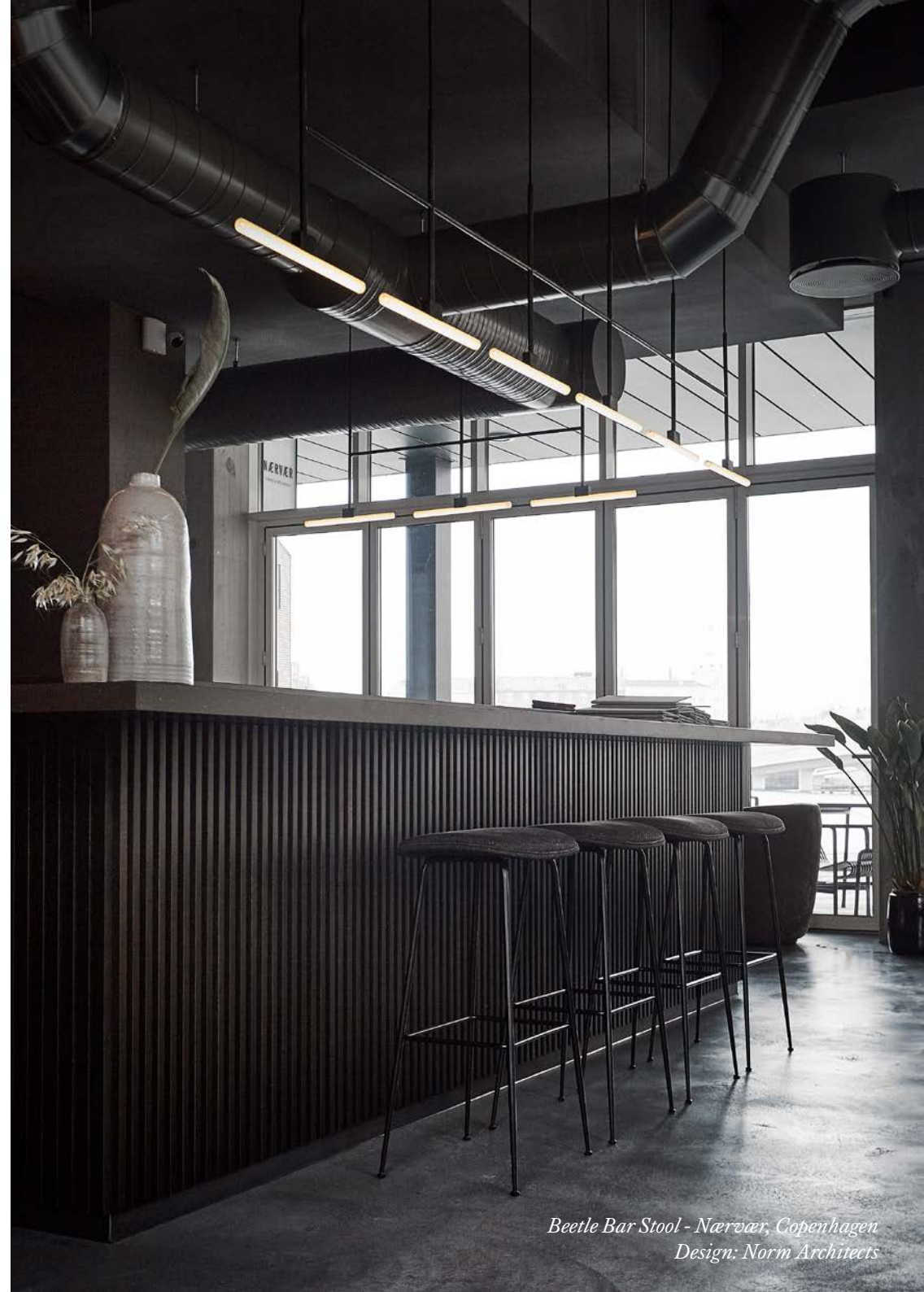
*Beetle Dining Chair - Le Roch, Paris
Design: Maison Sarah Lavoine*



Beetle Dining Chair



Beetle Bar Chair



*Beetle Bar Stool - Nærøer, Copenhagen
Design: Norm Architects*



Beetle Bar Chair



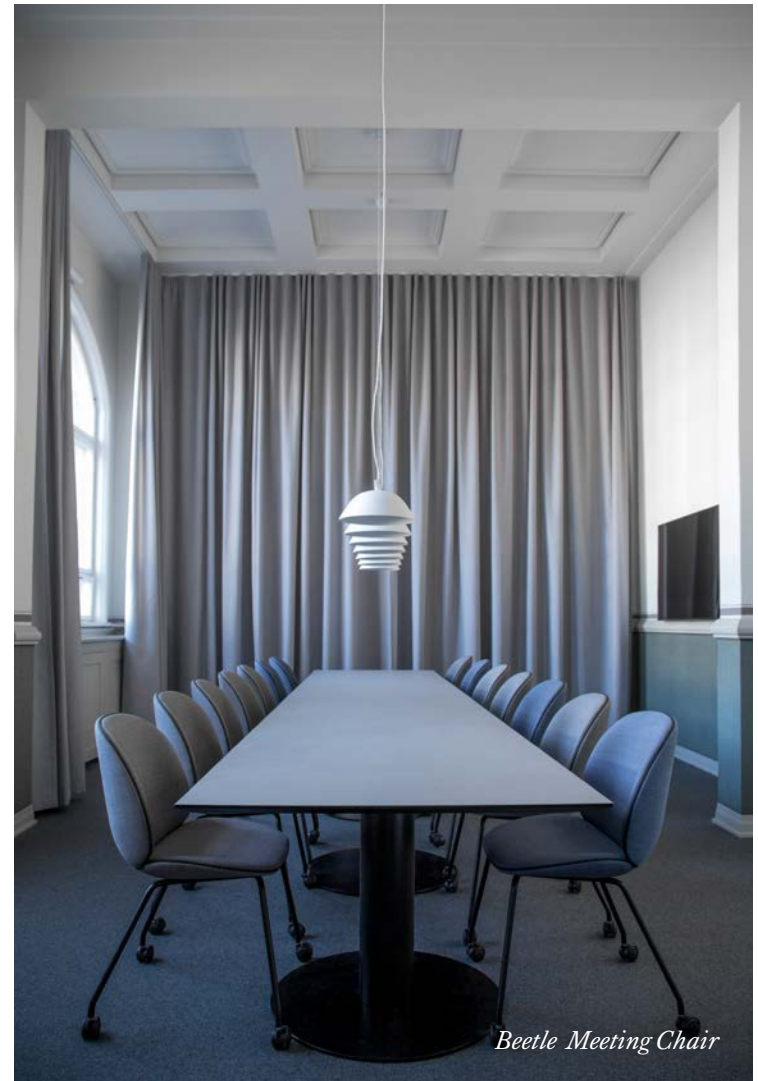
*Beetle Dining Chair - The Standard, Copenhagen
Design: GamFratesi*



*Beetle Dining Chair - Second Female, Copenhagen
Design: GUBI*



*Beetle Lounge Chair - Implement, Copenhagen
Design: GamFratesi*



Beetle Meeting Chair



The Beetle Collection

The Beetle Collection



Beetle Dining Chair



Beetle Meeting Chair



Beetle Bar Chair



Beetle Counter Chair



Beetle Bar Stool



Beetle Counter Stool



Beetle Ottoman



Beetle Lounge Chair



Beetle Sofa



Beetle Stool

The Beetle Collection

Upholstery options



Unupholstered Shell



Seat Upholstered Shell



Front Upholstered Shell



Fully Upholstered Shell

Shell options



Dark Green



Pastel Green



Pebble Brown



Sweet Pink



Alabaster White



Amber Brown



Black



New Beige

The Beetle Collection

Base options

Beetle Dining Chair



Plastic Base

Conic Base

Wood Base

Stackable

Beetle Meeting Chair



4-Star Swivel Base

4-Star Castor Base

Swivel Base

4-Leg Castor Base

Beetle Lounge Chair



Conic Base

Wood Base

4-Star Swivel Base

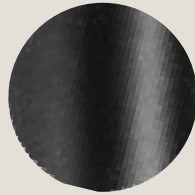
The Beetle Collection

Base finishes

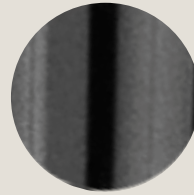
Metal



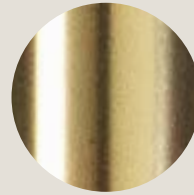
Antique Brass



Black



Black Chrome



Brass



Chrome



Soft White



Polished Aluminium/
Black

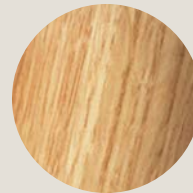
Wood



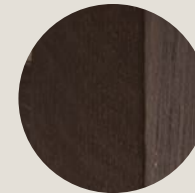
American Walnut



Black Stained
Beech



Oak



Smoked Oak

Plastic



Black



New Beige



Alabaster White



Customization



The Beetle Collection has bloomed into a series of unlimited possibilities. Endless combinations of seating shells, bases, colours, and fabrics are possible to create a unique and personalised chair.

Create & Combine

1. Upholstery Options

Upholstery



Unupholstered



Seat Upholstered



Front Upholstered



Fully Upholstered

2. Base Options

Base



Plastic Base



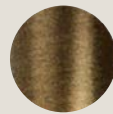
Conic Base



Wood Base

Base Finish

Metal



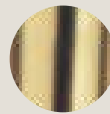
Antique Brass



Black



Black Chrome

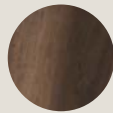


Brass

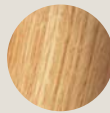


Chrome

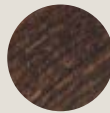
Wood



American Walnut



Oak



Smoked Oak



Black Stained Beech

Plastic



Black



New Beige



Alabaster White

3. Colours & Fabrics

Shell Colour



Dark Green



Sweet Pink



New Beige



Alabaster White



Pebble Brown



Amber Brown



Black



Pastel Green

For upholstered versions, unlimited combinations of fabric and leather are available.

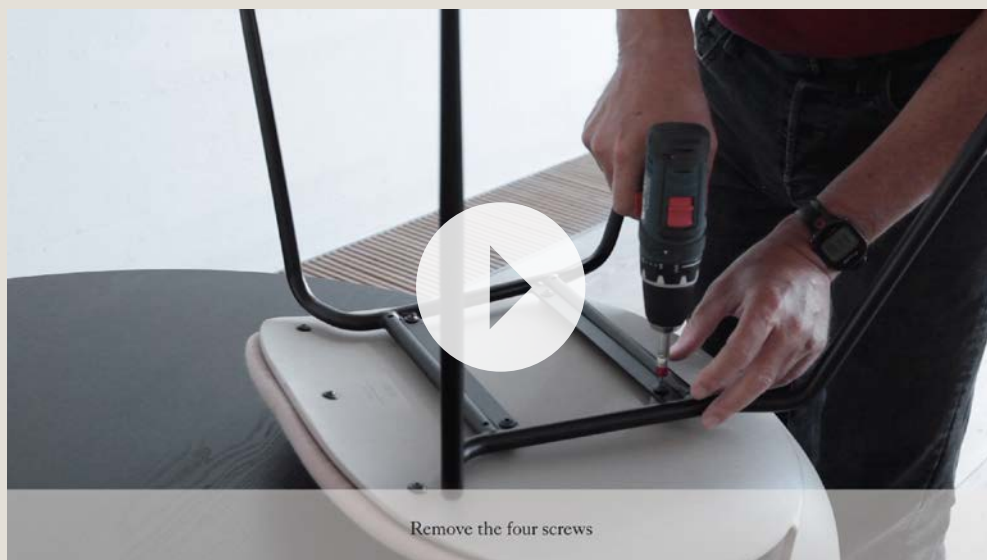
Create & Combine

Plastic Bases

		Unupholstered								Upholstered
	Shell Colors	Black*	Alabaster White*	New Beige*	Pebble Brown*	Amber Brown*	Pastel Green*	Sweet Pink	Dark Green	All Colors
Plastic Base	Black	●		●	●	●	●	●	●	●
	Alabaster White		●							
	New Beige			●						

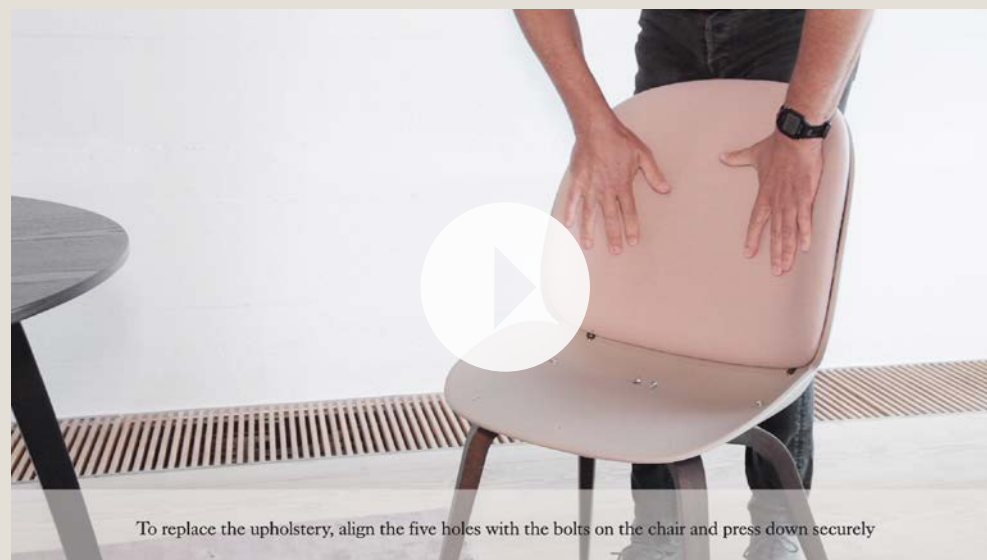
● Available combination ● Monochrome Plastic Chair *New shell color

Changing the upholstery



[Watch video here](#)

Changing the base



[Watch video here](#)

Beetle
in the press



Beetle Bar Chair - Vogue Living, Australia



Beetle Lounge Chair - Mad & Bolig, Denmark



Beetle Dining Chair - Residence, Austria



Beetle Dining Chair - Living etc., UK



Beetle Dining Chair - ELLE Decoration, UK



Beetle Dining Chair - Vogue Living, Australia



Beetle Bar Chair - ELLE Decoration, UK



Beetle Dining Chair - IDEAT, France



Beetle Bar Chair - Living etc., UK



Beetle Dining Chair - ELLE Decoration, Italy



Beetle Dining Chair - AD, France

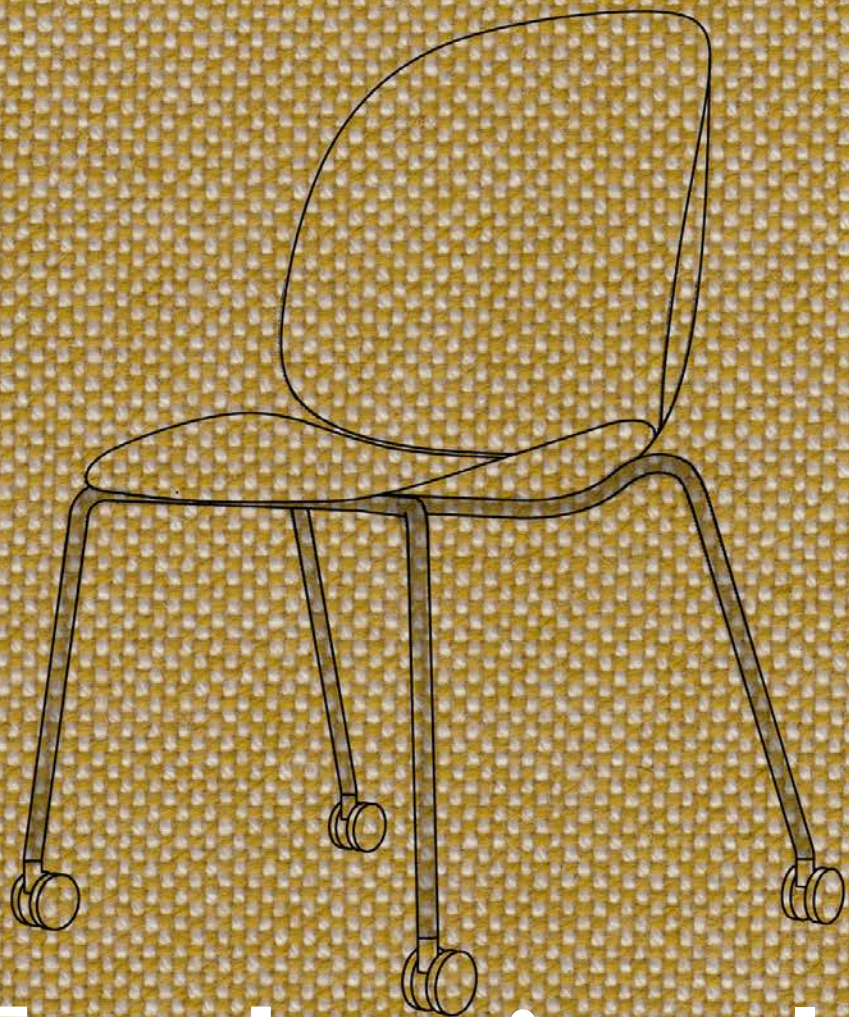


Beetle Bar Stool - ELLE Decoration, France



Beetle Bar Chair - Architectural Digest, Spain

Technical details



RAL 1006

Maisgelb
Maize yellow
Jaune maïs
Amarillo maíz
Giallo polenta
Maisgeel

Lead Times



*Unupholstered and Fast Track versions
(1-2 weeks)*



*Upholstered versions on stock
(3-4 weeks)*



*Upholstered versions not on stock
(7-8 weeks)*



Self-assembled Beetle (Knock-Down)

The unupholstered Beetle Chair is available as a knock-down version that can easily be assembled with the minimum of instructions. This allows for **low shipping costs, faster shipment and a more sustainable solution.**

Available for Beetle Dining Chair, Beetle Bar Stool and Beetle Counter Stool - unupholstered.

Colli of 4



Bases



Shells



Specifications - Beetle Dining Chair



Dimensions

Siting Height	43/ 45 cm*
Seat Width	49 cm
Seat Depth	44/ 41 cm*
Seat Height	48 cm
Back Height	44/ 42 cm*
Total (DxWxH)	55 x 56 x 87 cm

*unupholstered/ upholstered version

Weight

Unupholstered	5,8 kg
Seat upholstered	6,8 kg
Front upholstered	8,1 kg
Fully Upholstered	8,6 kg

Tests

Foam is fire retardant according to California Technical Bulletin 117. Foam according to BS 5852, Crib 5, is available on request. Chair fulfils the requirements in EN 1022: 2005 and EN 16139: 2013. Loading according to Test severity L1.

Contract certified
tested for professional use

For more information, follow this [link](#).

Test & Certificates – The Beetle Chair



Certified Chair, Tested for General Use

- Tests certification under European standards **EN 16139:2013 - L1 - General Use**. Suitable for use in office buildings, showrooms, public halls, function rooms, cafés, restaurants, canteens, banks, bars.
- The certification is valid for the Beetle Chair with



Plastic base



Conic base



Wood base



Stackable



4-star base



4-star w. castors

Shell & Base Certification

- The plastic shells and plastic bases of the Beetle are certified by **BIFMA** (USA Standards) and under **EN 16139:2013 - L2 - Extreme use** (European Standard) that ensure that furniture is commercial grade and can stand 8+ hours of use per day.

About Certification Standards - Fatigue, load & impact tests for furniture

- **European Standards EN 16139:2013** test for Furniture - Strength, durability and safety - requirements for non-domestic seating.
The EN Standards have 2 levels of test severity, L1 and L2. L1 is approval for General use (use in office buildings, showrooms, public halls, function rooms, cafés, restaurants, canteens, banks, bars.) L2 is for Extreme use (use in night-clubs, police stations, transport terminals, sport changing rooms, etc.) (non-controlled areas)
- **American Standards - ANSI / BIFMA** Product Safety and Performance Standards for American National Standard For Office Furnishings

	EN - L1 (General use)	EN - L2 (Extreme use)	BIFMA
Seat load	160 kg	200 kg	136 kg x 1 drop weight (152mm)
Back load	56 kg	70 kg	102 kg
Front edge load	130 kg	160 kg	n/a
Durability (Seat)	100 kg x 100.000	100 kg x 200.000	57 kg x 100.000 90 kg x 20.000 per corner
Durability (Back)	30 kg x 100.000	30 kg x 200.000	34 kg x 120.000
Legs sideways	40kg	76 kg	51 kg

Pricing – Beetle for all applications



*Beetle Dining Chair - Unupholstered,
Conic base, Black*

1.676 DKK
(ex. VAT)

- Canteens
- Cultural institutions



*Beetle Dining Chair - Front upholstered,
Conic base, Chrome, PG3*

3.596 DKK
(ex. VAT)

- Office spaces
- Cafés



*Beetle Dining Chair - Fully upholstered,
Conic base, Antique Brass, PG6*

8.156 DKK
(ex. VAT)

- Fine dining restaurants
- Luxury Hotels



Get Inspired

Facebook - Instagram - Pinterest

gubiofficial

GUBI store

Møntergade 19, Copenhagen

Image downloads, price lists & more

gubi.filecamp.com

GUBI.com

